

# DESIGN

ABILENE - 5252<sub>PS</sub>



SHADDOCK  
— HOMES —



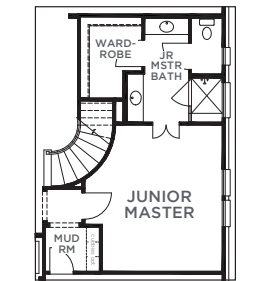
A



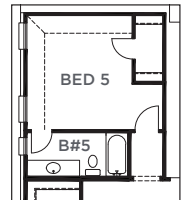
B



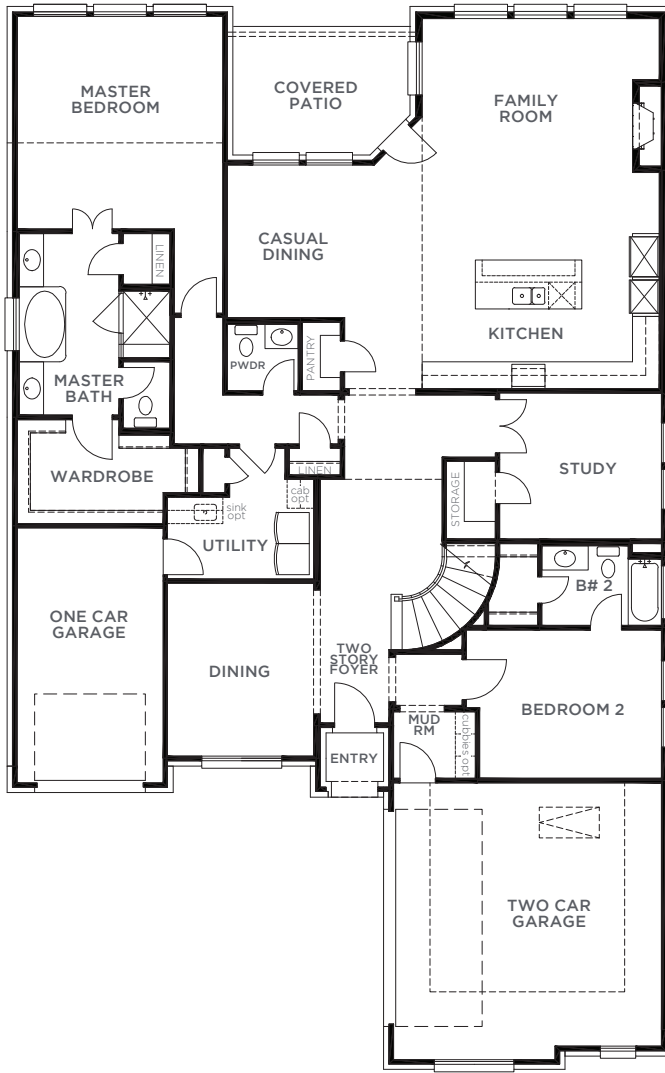
There may be existing or future design changes made in the floorplans, building products, methods, square footage or designs used in our homes that are not reflected in our information, sales center or in our models. The materials, designs, square footages, features and amenities shown are based upon current development plans, which are subject to change without notice. No guarantee is made that the designs, square footages, materials, features and amenities depicted by artist's renderings or otherwise described will be built, or if built, will be of the same type, size or nature as depicted or described. All cedar, stone and metal roofs are optional and available via change order. Prices and terms subject to change without notice. **REVISION DATE: 7.26.2018**



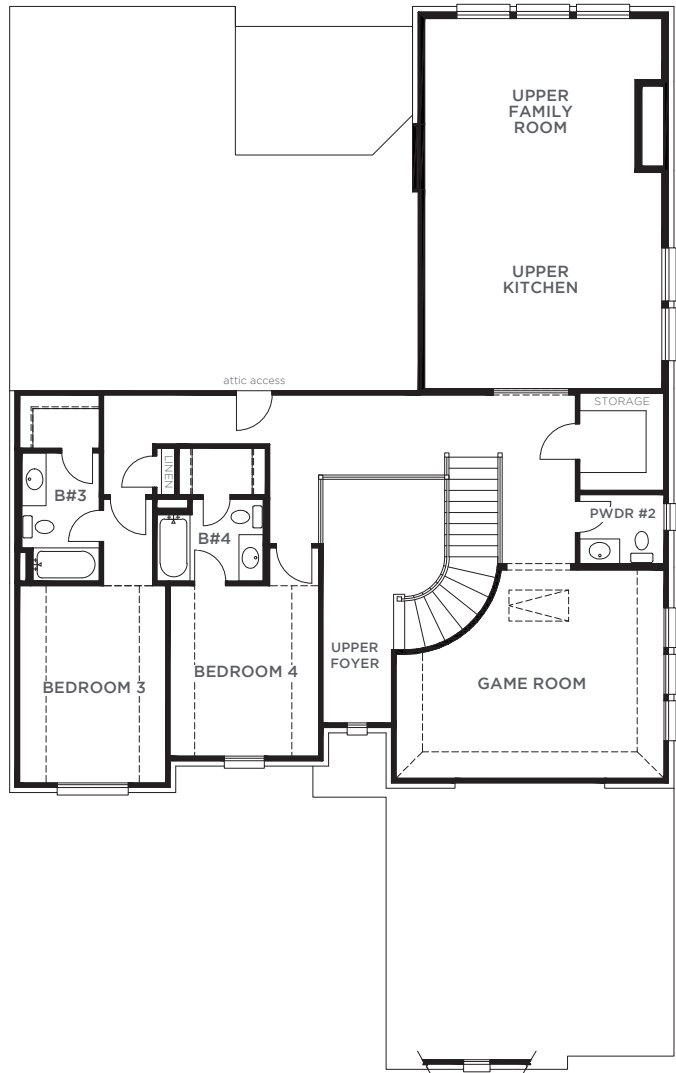
**JUNIOR MASTER OPTION**  
IN LIEU OF BED 2, BATH 2 & STUDY



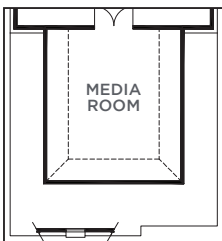
**BEDROOM 5 & BATHROOM 5 OPTION**



**FIRST FLOOR**



**SECOND FLOOR**



**MEDIA ROOM OPTION**



**TECH ROOM OPTION**  
IN LIEU OF STORAGE

**ABILENE**  
**5252PS** (7.26.18)

	S.FT
First Floor	2520
Second Floor	1264
<b>Total Living Area</b>	<b>3784</b>
1 Car Garage	235
2 Car Garage	460
Covered Entry	24
Covered Patio	124
Total Area	4627

**Options**

Bed 5/Bath 5	312
Media Room	237