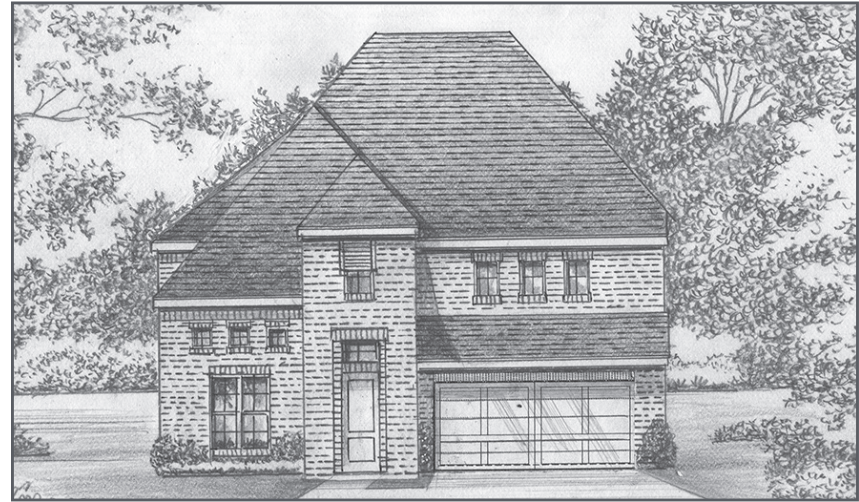


DESIGN

MERIDIAN - 4439



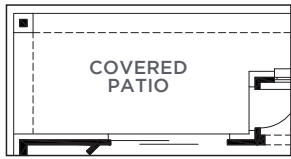
A



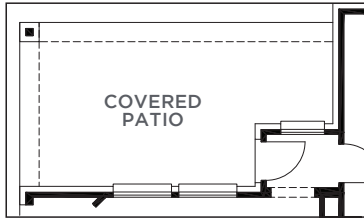
C



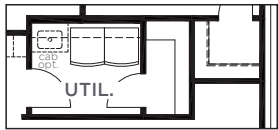
There may be existing or future design changes made in the floorplans, building products, methods, square footage or designs used in our homes that are not reflected in our information, sales center or in our models. The materials, designs, square footages, features and amenities shown are based upon current development plans, which are subject to change without notice. No guarantee is made that the designs, square footages, materials, features and amenities depicted by artist's renderings or otherwise described will be built, or if built, will be of the same type, size or nature as depicted or described. All cedar, stone and metal roofs are optional and available via change order. Prices and terms subject to change without notice. **REVISION DATE: 12.7.2018**



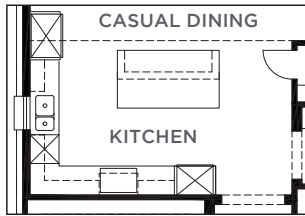
COVERED PATIO
8' SLIDING GLASS DOOR OPTION



COVERED PATIO
EXTENDED COVERED PATIO OPTION



UTIL.
UTILITY STORAGE OPTION



CASUAL DINING
KITCHEN
ALTERNATE KITCHEN LAYOUT OPTION

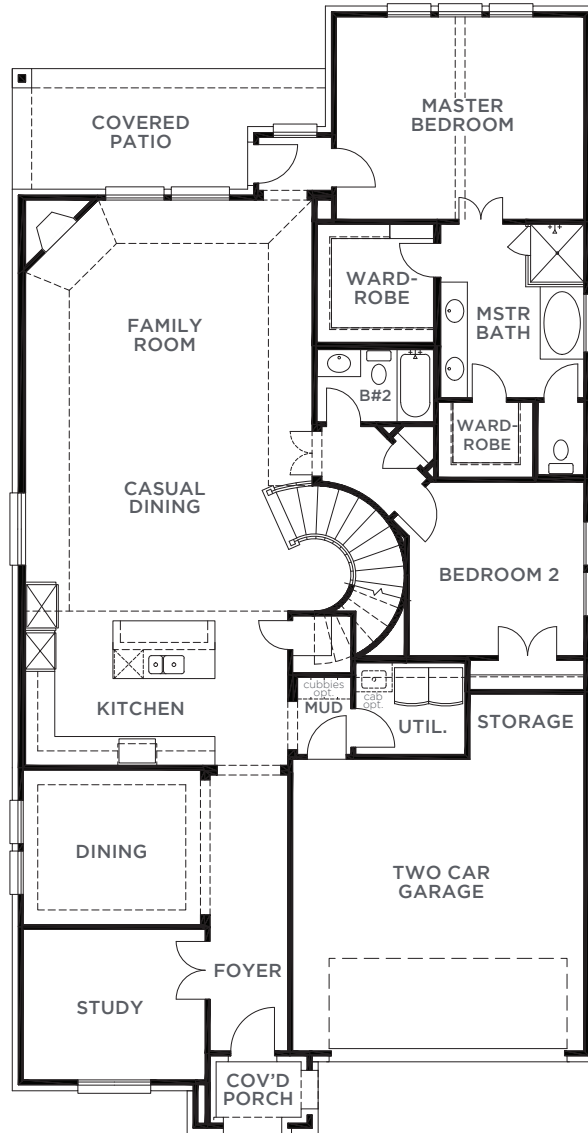
MERIDIAN
4439 (12.7.18)

| | S.FT |
|--------------------------|-------------|
| First Floor | 2226 |
| Second Floor | 879 |
| Total Living Area | 3105 |
| 2 Car Garage | 473 |
| Covered Porch | 41 |
| Covered Patio | 156 |
| Total Area | 3775 |

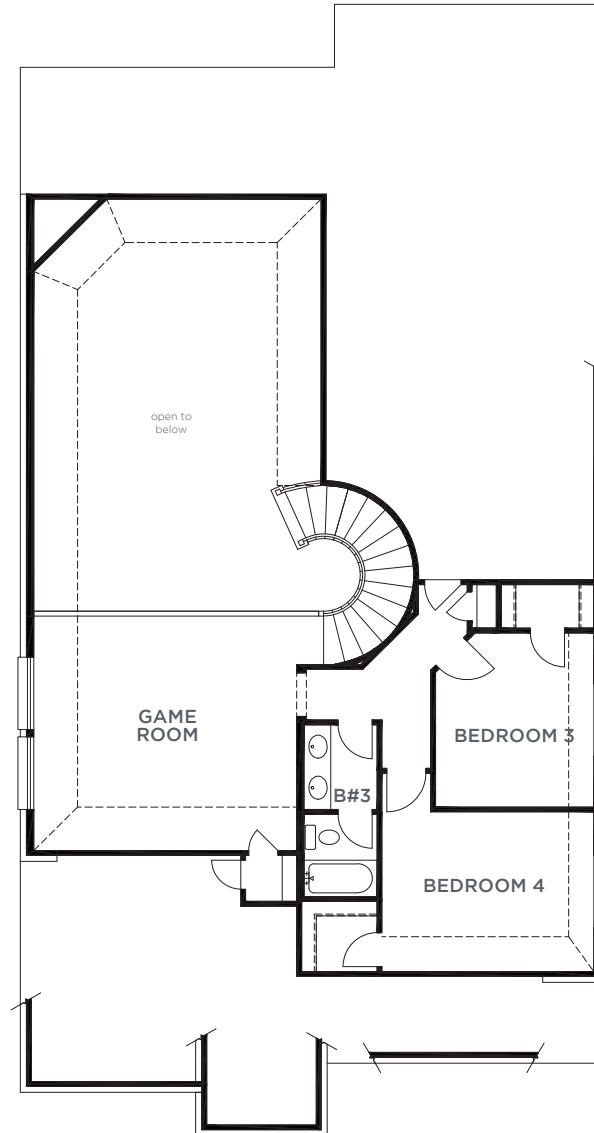
Options

| | |
|--------------------|-----|
| Media Room | 349 |
| 5th Bed & 4th Bath | 271 |
| Extended Patio | 65 |
| Utility/Storage | 26 |

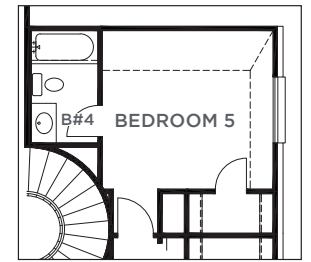
SHADDOCK HOMES SAXONY SERIES



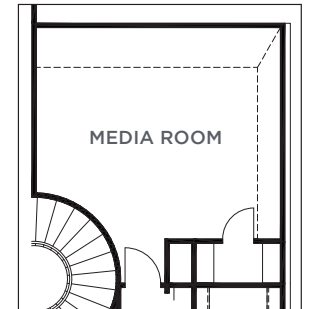
FIRST FLOOR



SECOND FLOOR



BEDROOM 5 & BATH 4 OPTION



MEDIA ROOM OPTION