

DESIGN

MERIDIAN - 4439_{MR}



SHADDOCK
—HOMES—
SAXONY SERIES



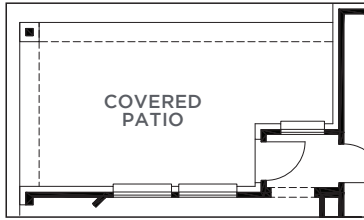
A



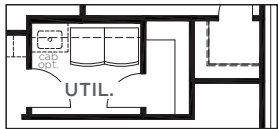
There may be existing or future design changes made in the floorplans, building products, methods, square footage or designs used in our homes that are not reflected in our information, sales center or in our models. The materials, designs, square footages, features and amenities shown are based upon current development plans, which are subject to change without notice. No guarantee is made that the designs, square footages, materials, features and amenities depicted by artist's renderings or otherwise described will be built, or if built, will be of the same type, size or nature as depicted or described. All cedar, stone and metal roofs are optional and available via change order. Prices and terms subject to change without notice. **REVISION DATE: 12.7.2018**



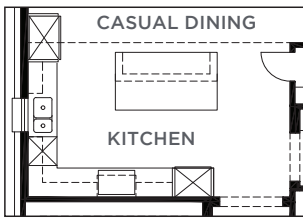
COVERED PATIO
8' SLIDING GLASS DOOR OPTION



COVERED PATIO
EXTENDED COVERED PATIO OPTION



UTIL.
UTILITY STORAGE OPTION



CASUAL DINING
KITCHEN
ALTERNATE KITCHEN LAYOUT OPTION

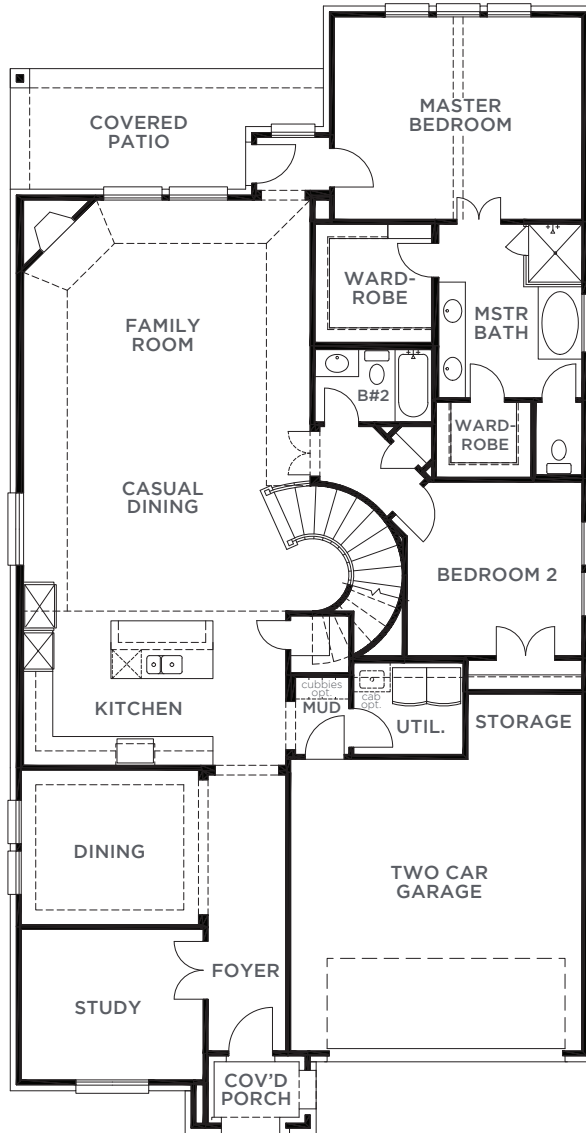
MERIDIAN
4439MR (12.7.18)

	S.FT
First Floor	2226
Second Floor	879
Total Living Area	3105
2 Car Garage	473
Covered Porch	41
Covered Patio	156
Total Area	3775

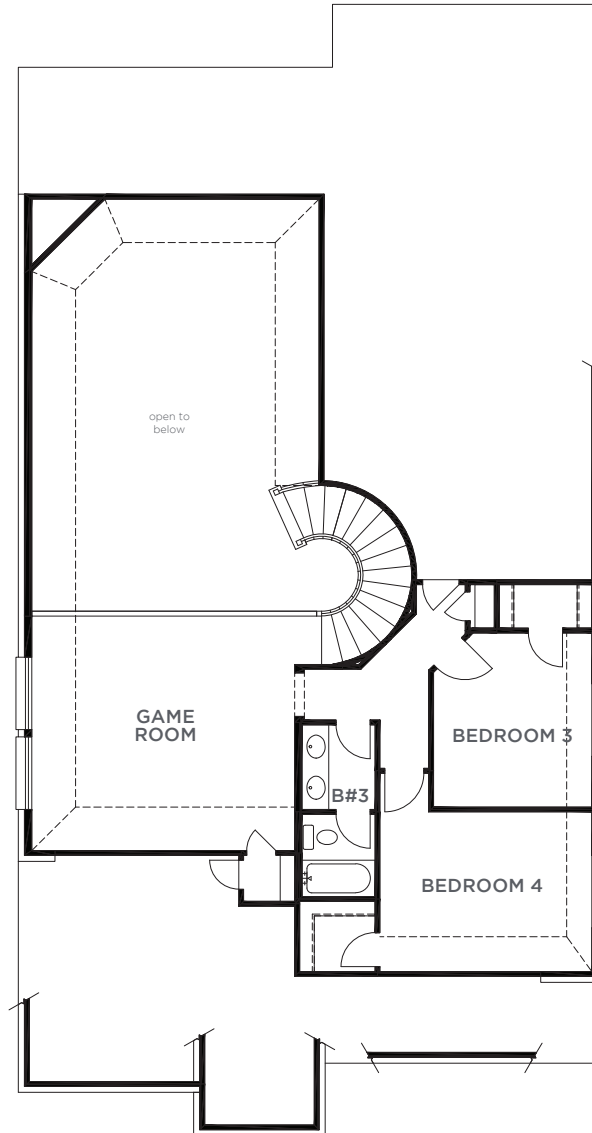
Options

Media Room	349
5th Bed & 4th Bath	271
Extended Patio	65
Utility/Storage	26

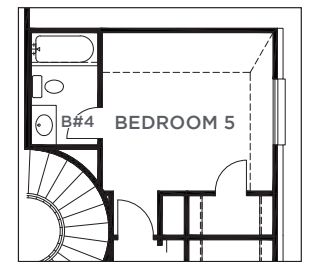
SHADDOCK HOMES SAXONY SERIES



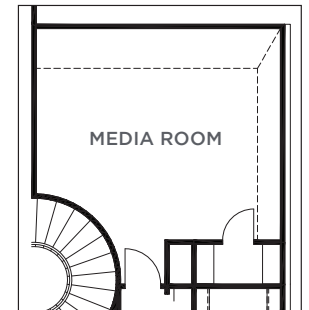
FIRST FLOOR



SECOND FLOOR



BEDROOM 5 & BATH 4 OPTION



MEDIA ROOM OPTION